

75 LM Garage door wired open button Instruction

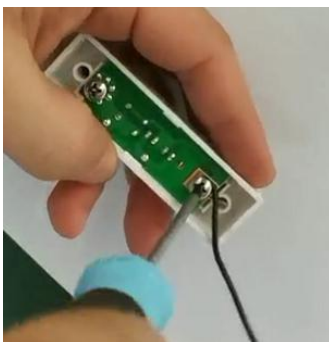
Please read all instructions carefully before using this product. If you have any questions, please contact us in time.

Accessories	Parameter	Quantity
Garage door button	2.8 x 0.71 x 0.71 inches	1
Connector	12V	
color	white	
Light Color	green	1
Compatible system	Billion Code, 390MHZ/Security+, 390MHZ/Security+, 315MHZ	2
model	75LM	
manual		1

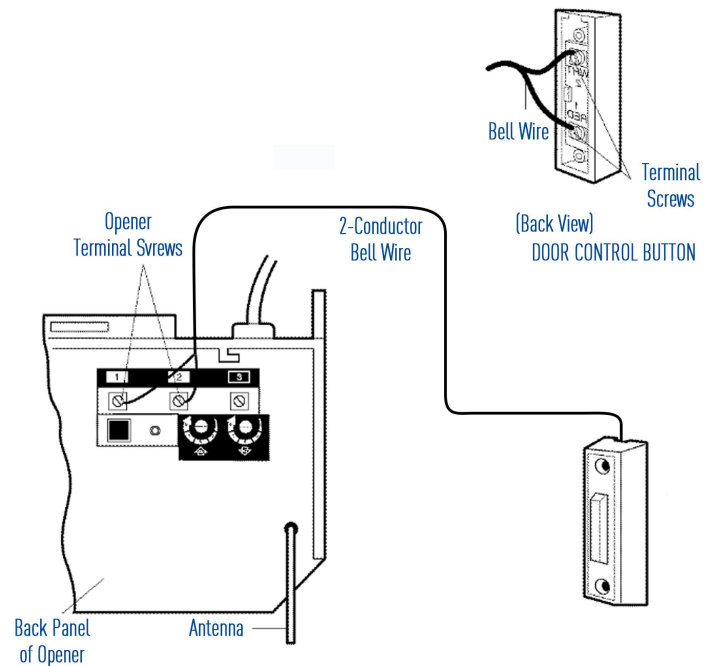
***This door control is not compatible with Security+ 2.0® models with yellow learning buttons**

Product Information:

1. Unscrew the screws on the circuit board and connect the wires. Then tighten the screws.



2. Connect bell wire to terminals as follows



3. Fix the button on the wall with screws.



WARNING ⚠:

To prevent possible **SERIOUS INJURY** or **DEATH** from electrocution:

- Be sure power is **NOT** connected **BEFORE** installing door control.
- Install door control within sight of garage door, out of reach of children at a minimum height of 5 feet (1.5m), and away from **ALL** moving parts of door.